

THE BICENTENNIAL YEAR OF 2024

AND THE STORY OF WEST CENTRAL NEIGHBORHOOD—
A JOURNEY FROM 1824 TO 2024



**FORT WAYNE'S
WEST CENTRAL—
ESTABLISHED (PARTIALLY)
MAY 20, 1824**

**THE LOCAL HISTORIC DISTRICT WAS
ESTABLISHED SEPTEMBER 26, 1984**

HAPPY 200TH
ANNIVERSARY!

And:

Happy 40th Anniversary!

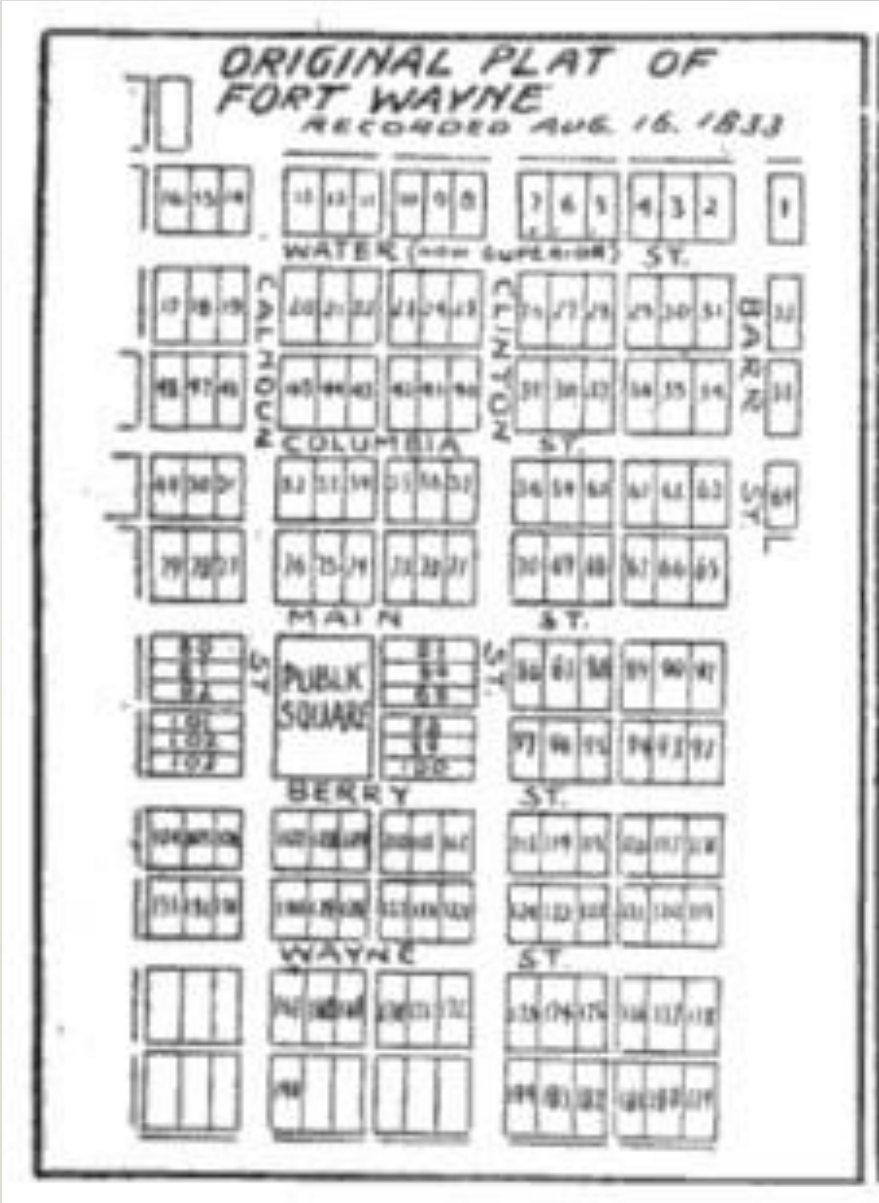


FORT WAYNE'S ORIGINAL PLAT—

RECORDED MAY 20, 1824.

WEST OF CALHOUN STREET IS THE WEST CENTRAL NEIGHBORHOOD

Courtesy of Bert J. Griswold, The Pictorial History of Fort Wayne

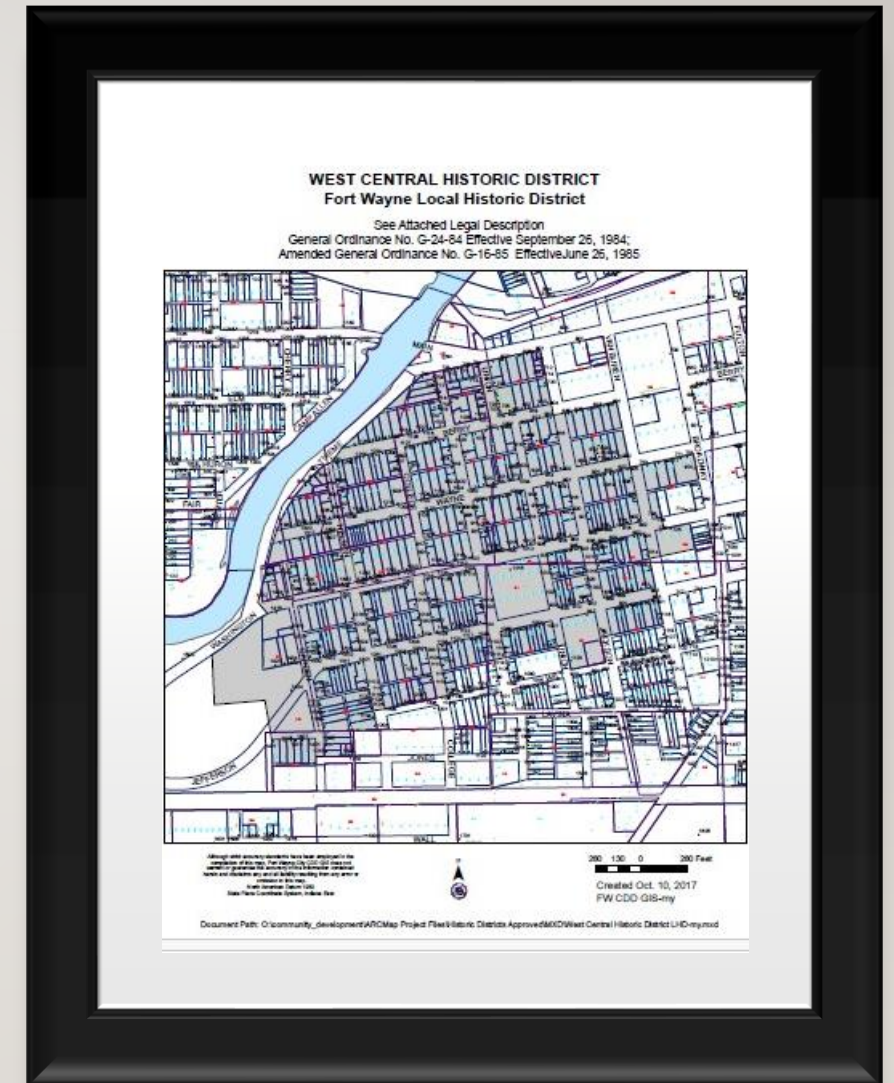


ALLEN COUNTY & THE ORIGINAL PLAT OF FORT WAYNE BY BARR & MCCORKLE

- Allen County was formed April 1, 1824 by the State of Indiana.
- Fort Wayne (original plat) was recorded May 20, 1824 in Winchester, Randolph County, Indiana.

WEST CENTRAL LOCAL HISTORIC DISTRICT

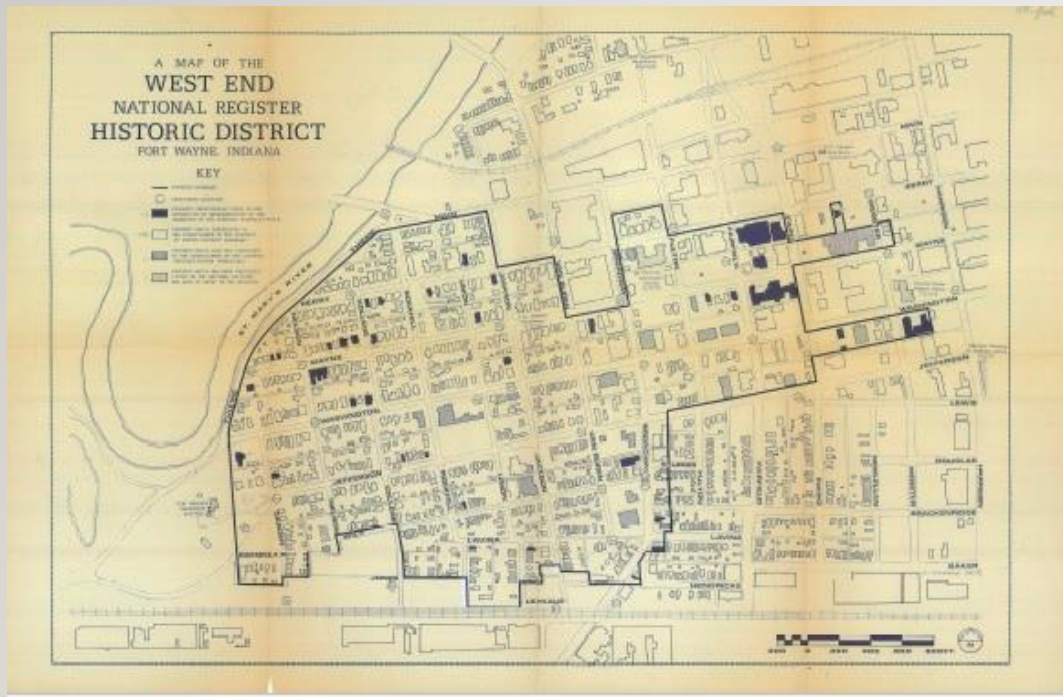
First established
September 26, 1984



WEST CENTRAL LOCAL HISTORIC DISTRICT— THREE PHASES

1. Original West Central LHD from Main Street, south to Washington Blvd.; effective September 26, 1984.
2. First West Central expansion from Washington Blvd. south to parts of Wilt Street; effective June 26, 1985.
3. Second West Central expansion, added parts of Wilt, Lavina, and N-S streets; effective November 12, 2020.

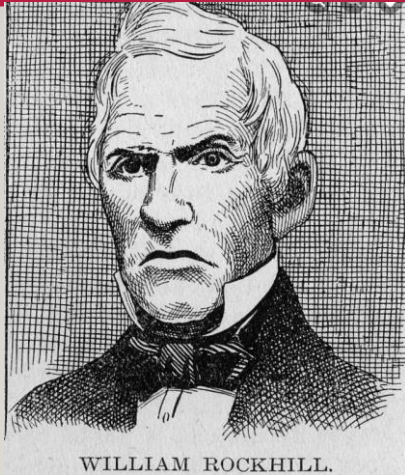
AND...ON NOVEMBER 15, 1984
THE “WEST END HISTORIC DISTRICT,” WAS
LISTED IN THE NATIONAL REGISTER OF HISTORIC
PLACES



SAMUEL HANNA (PRACTICALLY) THE FOUNDER OF FORT WAYNE



THE WILLIAM
ROCKHILL HOUSE;
W. BERRY AT
ROCKHILL,
SOUTHEAST
CORNER

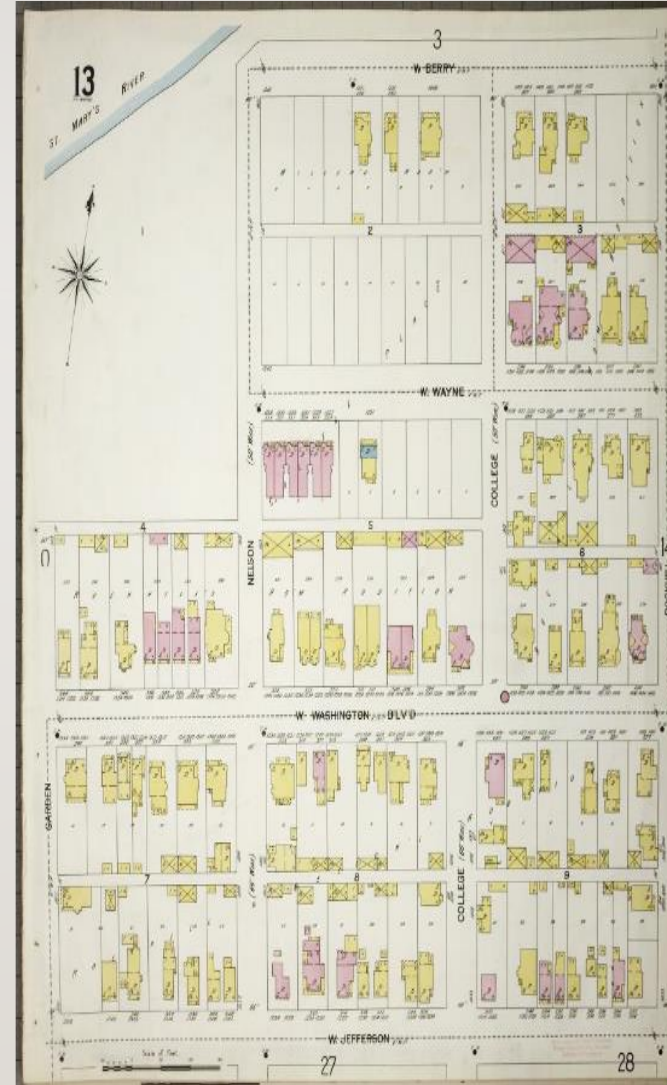


WEST CENTRAL NEIGHBORHOOD

THE ONLY THING THAT
TRULY REMAINS THE
SAME:

IS CHANGE
AND THE
MANAGEMENT OF
CHANGE

Sanborn Fire Insurance Map: 1902



THE ROCKHILL HOUSE LOCATION IN 1964— AND THE LOCATION TODAY—1023 W. BERRY



MANAGEMENT OF CHANGE— FILLING THE FORMER PARKING LOT WITH HOMES

FORMERLY--

633 W. WAYNE STREET



IS NOW--

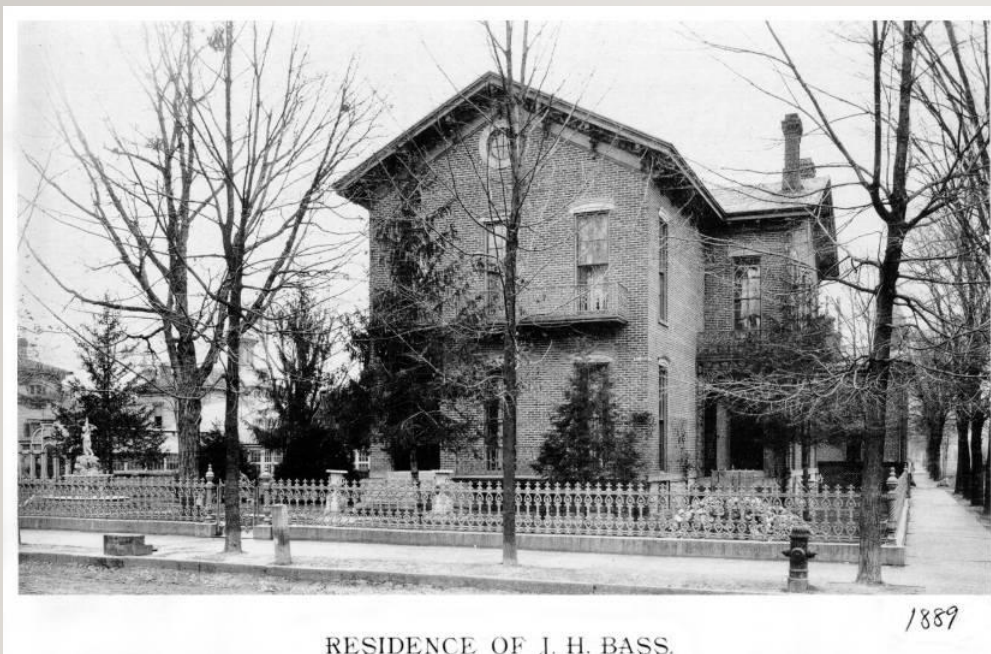
1023 W. BERRY STREET



EARLY HOMES AND BUILDINGS—LOST

JOHN H. BASS HOUSE (DEMOLISHED)

435 W, BERRY ST., PHOTO 1889



CHARLES ORR HOUSE (DEMOLISHED)

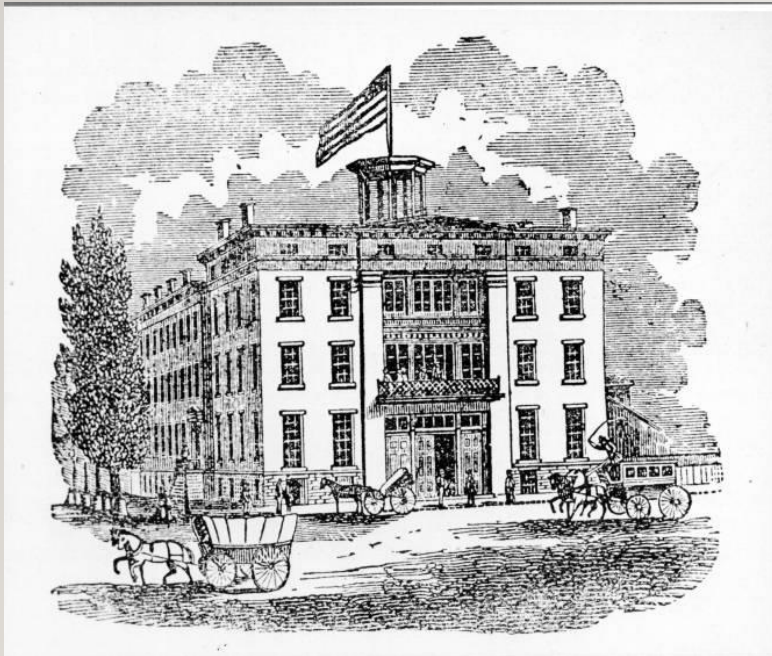
624 W. WAYNE ST., PHOTO 1962



EARLY HOMES AND BUILDINGS—LOST

THE ROCKHILL HOUSE, 1858

LATER THE HOME OF ST. JOSEPH HOSPITAL



ONE OF NUMEROUS SPEC HOUSES, BUILT BY
WILLIAM ROCKHILL

GREELEY AND VAN BUREN, FACING THE CANAL



EARLY HOMES AND BUILDINGS—LOST

BARNETT HOUSE-FIRST BRICK(?)

1824



THE FIRST BRICK BUILDING
ERECTED IN FORT WAYNE.

James Barnett, in 1824, erected the first brick building in Fort Wayne, on the north side of Columbia Street, east of Clinton. The brick was made by Benjamin Archer. Used as a residence for many years, the building at the last served as the location of Schwieter's bakery. It was torn down in 1909.

WILLIAM G. EWING HOUSE, 1854

NW CORNER BERRY & EWING



EARLY HOMES AND BUILDINGS

MARY ROCKHILL TYLER HOUSE,
BUILT C.1847 (PHOTO C.2000)



MARY ROCKHILL TYLER HOUSE
918 VAN BUREN STREET



INSTITUTIONAL USES HAVE A LONG HISTORY IN WEST CENTRAL

THE FORT WAYNE PUBLIC LIBRARY
PHOTO 1928



THE FORT WAYNE PUBLIC LIBRARY
PHOTO APRIL 29, 1965



CHURCHES OF WEST CENTRAL

PLYMOUTH CONGREGATIONAL
CHURCH, IMAGE C.1933



PLYMOUTH CONGREGATIONAL CHURCH, FORT WAYNE, IND.

720

OLD PLYMOUTH CHURCH
BUILT 1892 (JEFFERSON AT HARRISON)



CHURCHES OF WEST CENTRAL

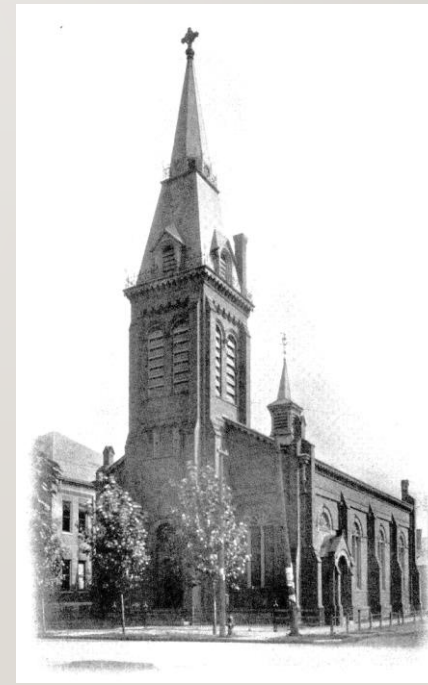
EMMANUEL LUTHERAN CHURCH

IMAGE 1876



ST. JOHN EVANGELICAL LUTHERAN

CHURCH, PHOTO 1906



SCHOOLS OF WEST CENTRAL

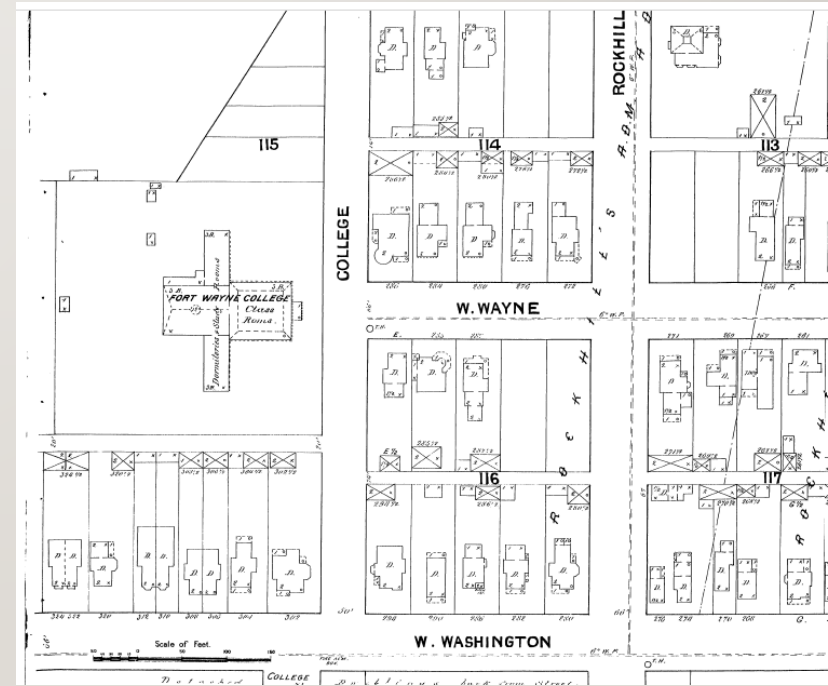
THE METHODIST COLLEGE

PHOTO 1898



SANBORN FIRE INSURANCE MAP

SHEET 3, 1890



SCHOOLS OF WEST CENTRAL

EMMANUEL LUTHERAN SCHOOL

C.1950



WASHINGTON SCHOOL

PHOTO C.1915



SCHOOLS OF WEST CENTRAL

ST. JOHN LUTHERAN SCHOOL,
W. WASHINGTON, C.1962



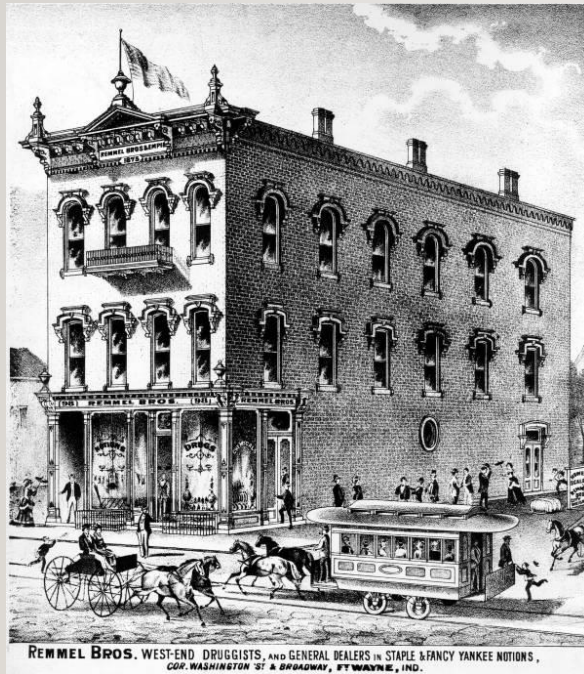
FORT WAYNE ART SCHOOL & MUSEUM
C.1962



BUSINESS AND COMMERCE IN WEST CENTRAL

BROADWAY & WASHINGTON

IMAGE C.1889



BROADWAY & WASHINGTON

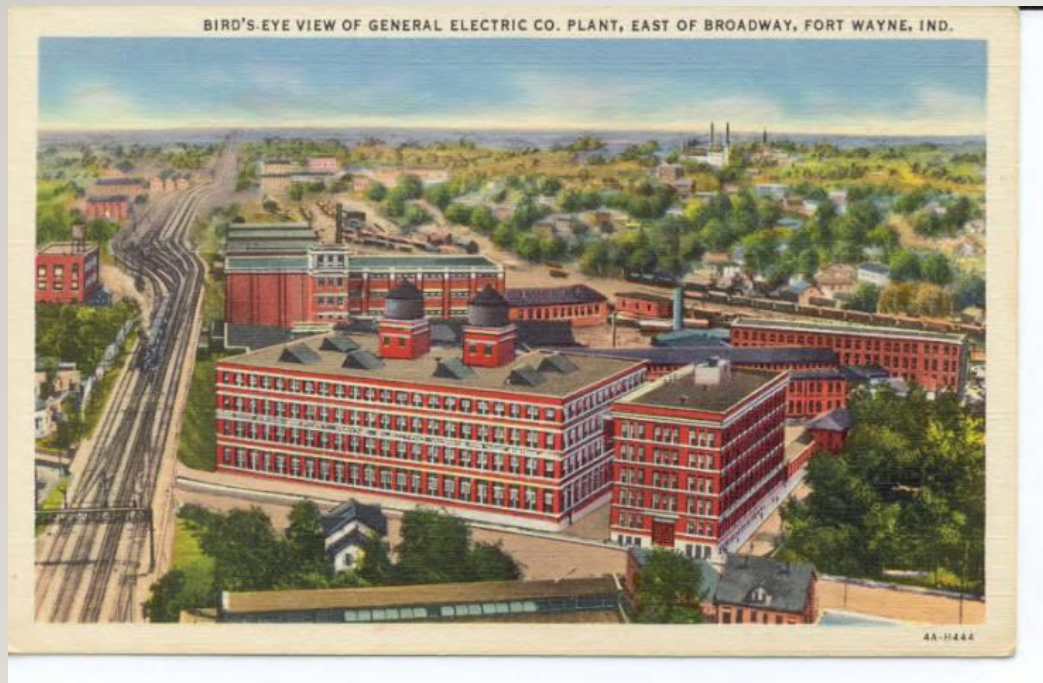
PHOTO C.1962



BUSINESS AND COMMERCE IN WEST CENTRAL

GENERAL ELECTRIC CAMPUS

C.1940



GE SHIFT CHANGE

MARCH 7, 1945

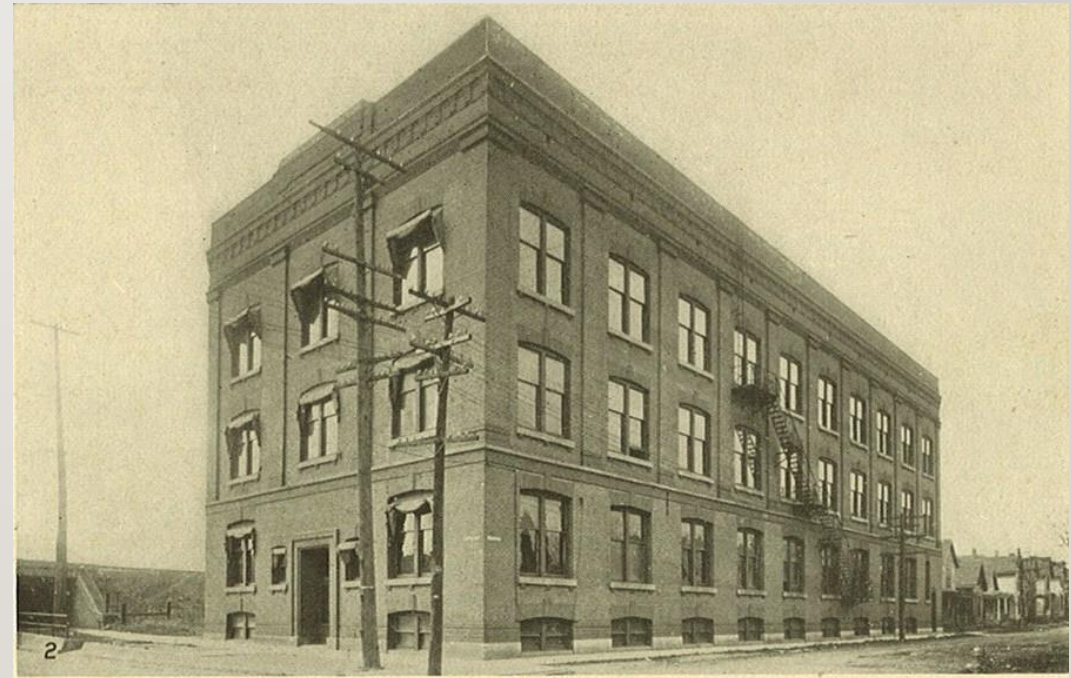


BUSINESS AND COMMERCE IN WEST CENTRAL

STEINHART BUILDING:
GM AUTO DEALERSHIP, PHOTO C.1930



W.M. GRIFFIN CO.: MAIL ORDER PATENT MEDS
PHOTO C.1913



BUSINESS AND COMMERCE IN WEST CENTRAL—RESIDENTIAL CONVERSIONS

ROBERT & CLARA BELL HOUSE –
KLAEHN FUNERAL HOME, C.1940



ROBERT & CLARA BELL HOUSE –
KLAEHN FUNERAL HOME, C.1940



BUSINESS AND COMMERCE IN WEST CENTRAL

Today—the Bell Mansion
(with the later addition
by A.M. Strauss &
Associates). Photo, 2008



RESIDENTIAL WEST CENTRAL

WEST BERRY AT BROADWAY

LOOKING WEST, 1889



WEST BERRY LOOKING EAST, 1889



RESIDENTIAL WEST CENTRAL

CHARLES F. MUHLER HOUSE
IMAGE, 1876



CHARLES F. MUHLER HOUSE (RIGHT)
PHOTO, C.1935



RESIDENTIAL WEST CENTRAL

Charles F. Muhler
House,

Photo, 2019



RESIDENTIAL WEST CENTRAL

BROADWAY AND W. WAYNE ST.

PHOTO, 1931



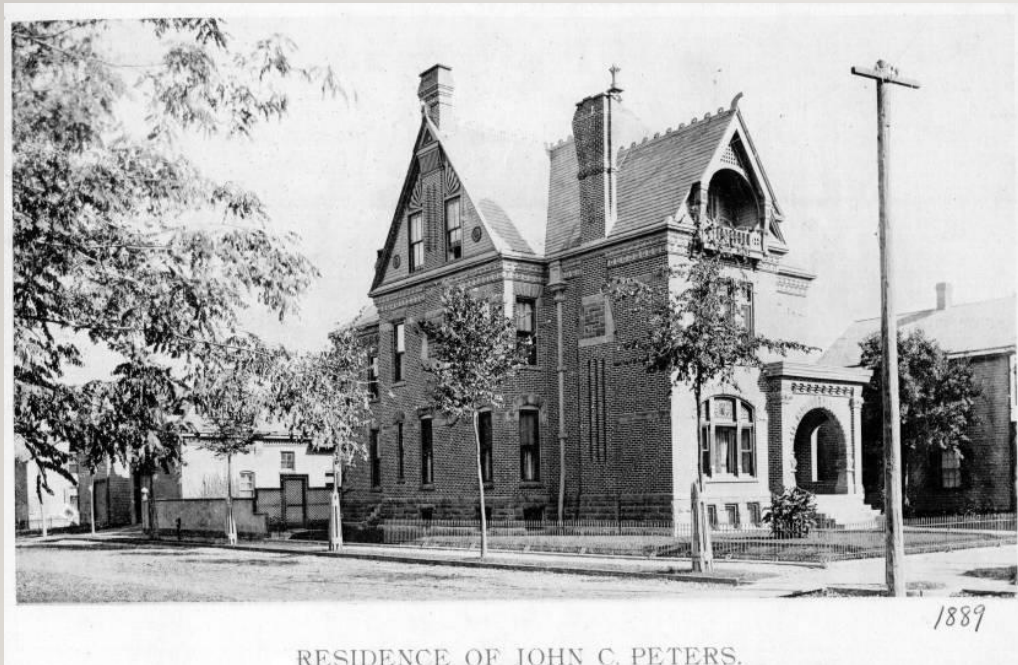
BROADWAY AND W. WAYNE ST.

PHOTO, C.1975



RESIDENTIAL WEST CENTRAL

J.C. PETERS HOUSE, 832 W. WAYNE
PHOTO, 1889



J.C. PETERS HOUSE
PHOTO, C.1975



J.C. PETERS HOUSE,
832 W.WAYNE

PHOTO, 2020

Better than ever!



RESIDENTIAL WEST CENTRAL

OLIVER S. HANNA HOUSE, W. BERRY & UNION

PHOTO C.1972



HORATIO WARD HOUSE, 903 W. BERRY

PHOTO C.1972



RESIDENTIAL WEST CENTRAL

ROBERT W.T. DEWALD HOUSE
PHOTO 1889



Residence of R. W. T. DEWALD.

R.W.T. DEWALD HOUSE (ROCKHILL
HOUSE IN BACKGROUND) C.1962



RESIDENTIAL WEST CENTRAL

DeWald House

Photo, 2020



RESIDENTIAL WEST CENTRAL

1020 W.WAYNE STREET

PHOTO C.2006



1020 W.WAYNE STREET

PHOTO 2020



RESIDENTIAL WEST CENTRAL

1020 W. WAYNE STREET

PHOTO, C.1981



1020 W. WAYNE STREET

PHOTO, 2020



RESIDENTIAL WEST CENTRAL— IN MEMORY OF JODY SMITH

1029 W. WAYNE STREET
PHOTO, JUNE 1981



1029 W. WAYNE STREET
PHOTO, 2006



RESIDENTIAL WEST CENTRAL LITTLE CHANGE—BUT LOOK TO THE LEFT

BROADWAY-LOOKING NORTH TO
W. WAYNE STREET, C. 1900



BROADWAY-LOOKING NORTH TO
W. WAYNE STREET, C. 1960



IT'S GONE (AND THE WHOLE BLOCK-FACE)! A CATALYST FOR THE LOCAL HISTORIC DISTRICT

BROADWAY AT W. WAYNE,
C.1900



BROADWAY AT W. WAYNE,
MAY 2023



RESIDENTIAL WEST CENTRAL WE WORK ON MANAGING CHANGE—TOGETHER

830 W. JEFFERSON BLVD.

PHOTO, 2006



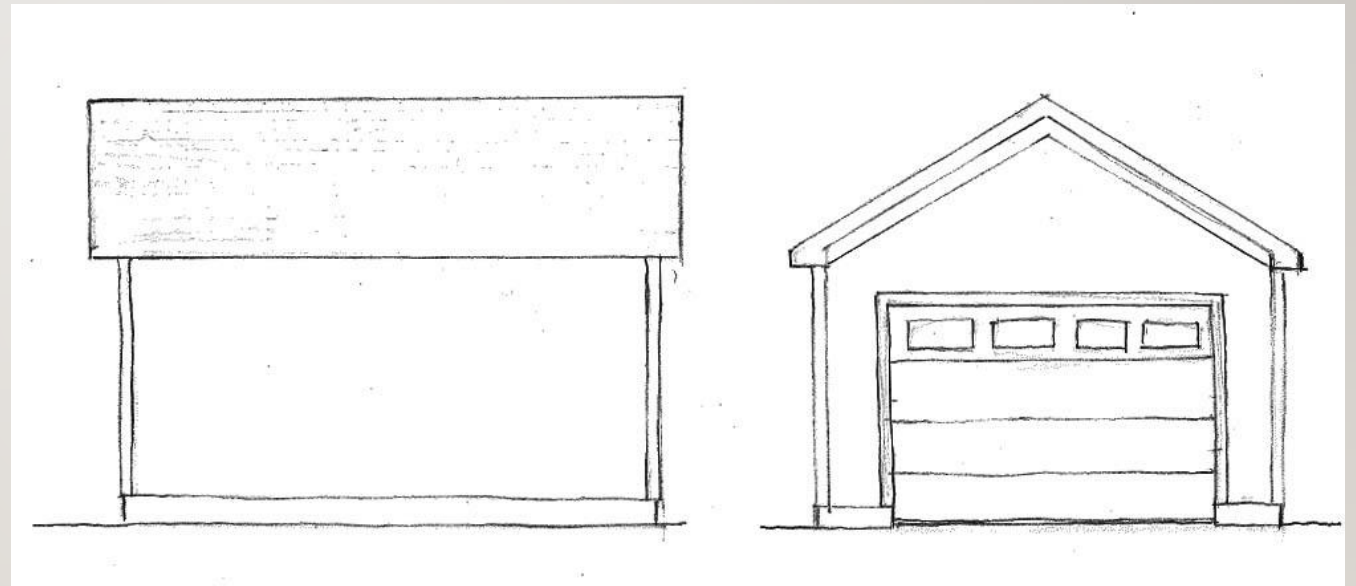
830 W. JEFFERSON BLVD.

PHOTO, NOVEMBER, 2023



GARAGE REVIVAL

New construction
in the 2010s

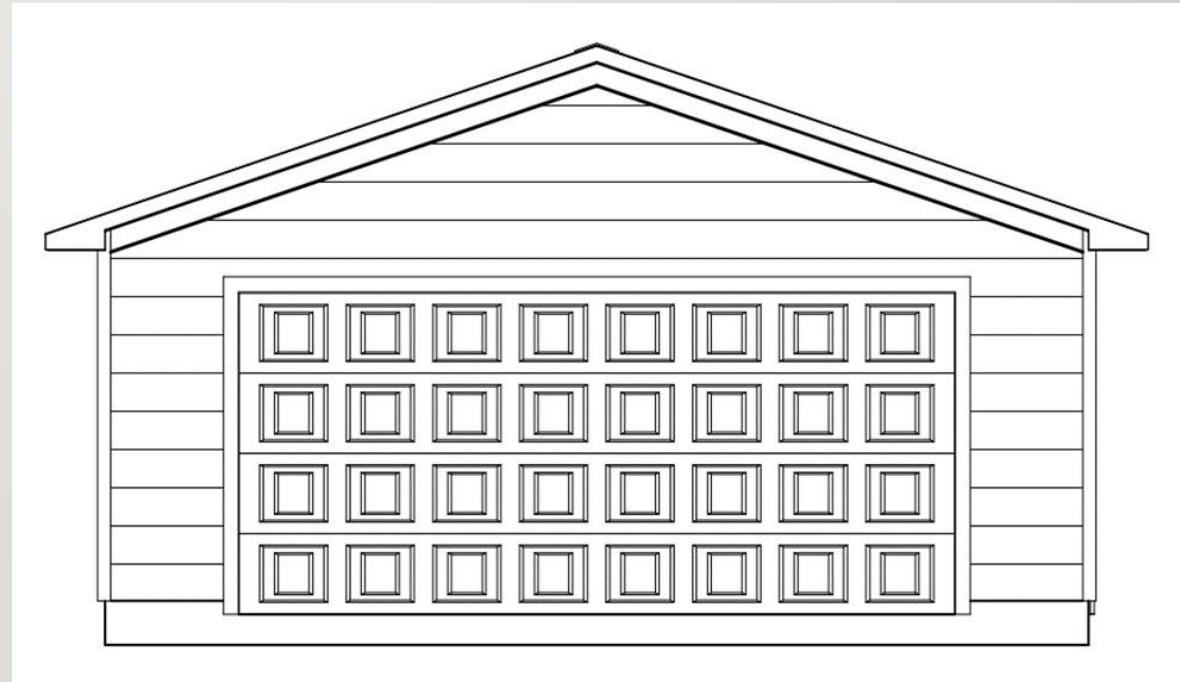


DOZENS OF GARAGES WERE BUILT IN THE NEIGHBORHOOD

RENTAL PROPERTIES AND APARTMENTS WERE CONVERTED, TO...



OWNER-OCCUPIED SINGLE-FAMILY HOUSING



OWNER-OCCUPANTS WANT GARAGES...

815 W WASHINGTON BLVD.



816 W. JEFFERSON BLVD.



...AND GARAGES...

801 W. WASHINGTON BLVD.



805 W. WAYNE STREET



...AND GARAGES...

820 W. JEFFERSON BLVD.



915 W. BERRY STREET



...AND GARAGES!

1024 NELSON STREET



1016 GARDEN STREET



TIME TO WRAP IT UP AND HIT THE ROAD! FROM QUIET PARK TO HIGHWAY—US 24

SWINNEY PARK, C.1912



SWINNEY PARK, C.1936



THANK YOU FOR THE INVITATION THIS EVENING!

Creager Smith

Planner II, Historic Preservation & Culture

City of Fort Wayne

Creager.Smith@cityoffortwayne.org

Feel free to call me at 260-427-2161

Or

Nate Lefever at 260-427-2523

August 19, 2024